

Seasons

Choreography: Rory Legg
Lighting Design: Lyle Lopez
SHIFT FCC

Music: *Ribs* by Lorde

Seasons

By Rory Legg

- Lyrical/ Contemporary Piece
- Trio cast
- This piece explores isolation and connection as well as the ways similar paths can be navigated and experienced differently.



Isolation: having minimal contact or little in common with others.

Connection: the act of joining
or the state of being joined

Seasons

- **The palette moves organically from soft ambers and golds to muted lavenders and cool mauves, creating a visual metaphor for the passage from childhood's warmth to adulthood's distance.**
- **Beginning:** Dreamlike, tender, and fluid — sunlight tones filtered through haze or sidelight, evoking innocence and togetherness.
- **Middle:** Gradual desaturation — a world dimming slightly, colors losing vibrancy as emotional complexity deepens.
- **End:** Cool, reflective, and sculptural — where form, shadow, and isolation replace openness.

Emotional realism with poetic
fluidity

The stage world of Seasons should feel painterly and temporal, like watching the light of a single day unfold across a lifetime. Every cue becomes a brushstroke in the emotional landscape of growing up — from sunrise to dusk, from connection to reflection.

Seasons

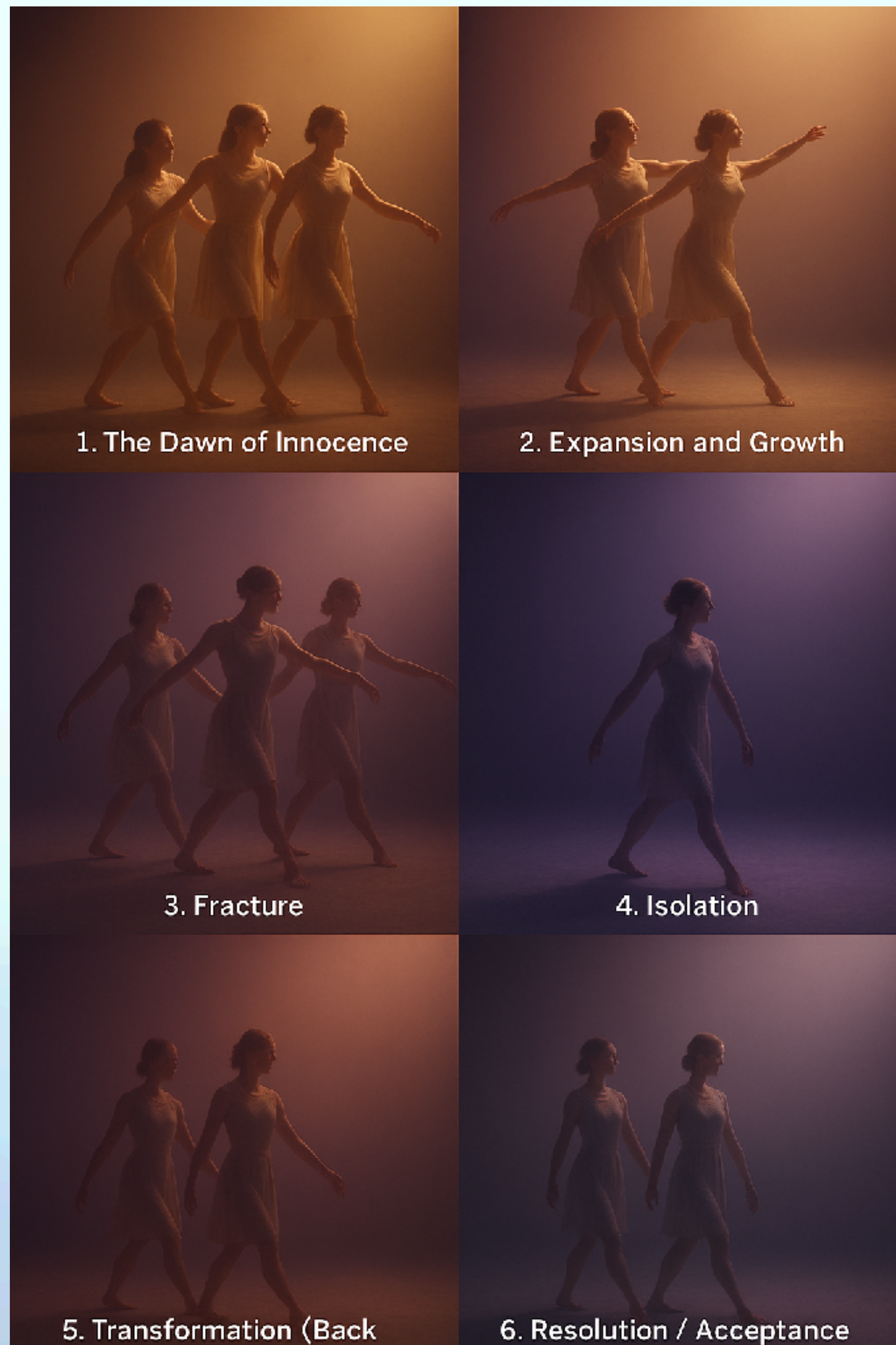
Aesthetic

- The aesthetic of Seasons is lyrical, transitional, and human, akin to a tapestry of light that breathes with time. It captures the delicate beauty of growth, connection, and the inevitable changes that shape our lives.



Seasons

Progression



- **Dawn of Innocence**
- **Expansion & Growth**
- **Fracture**
- **Isolation**
- **Transformation**
- **Resolution**

EMOTIONAL RESPONSE







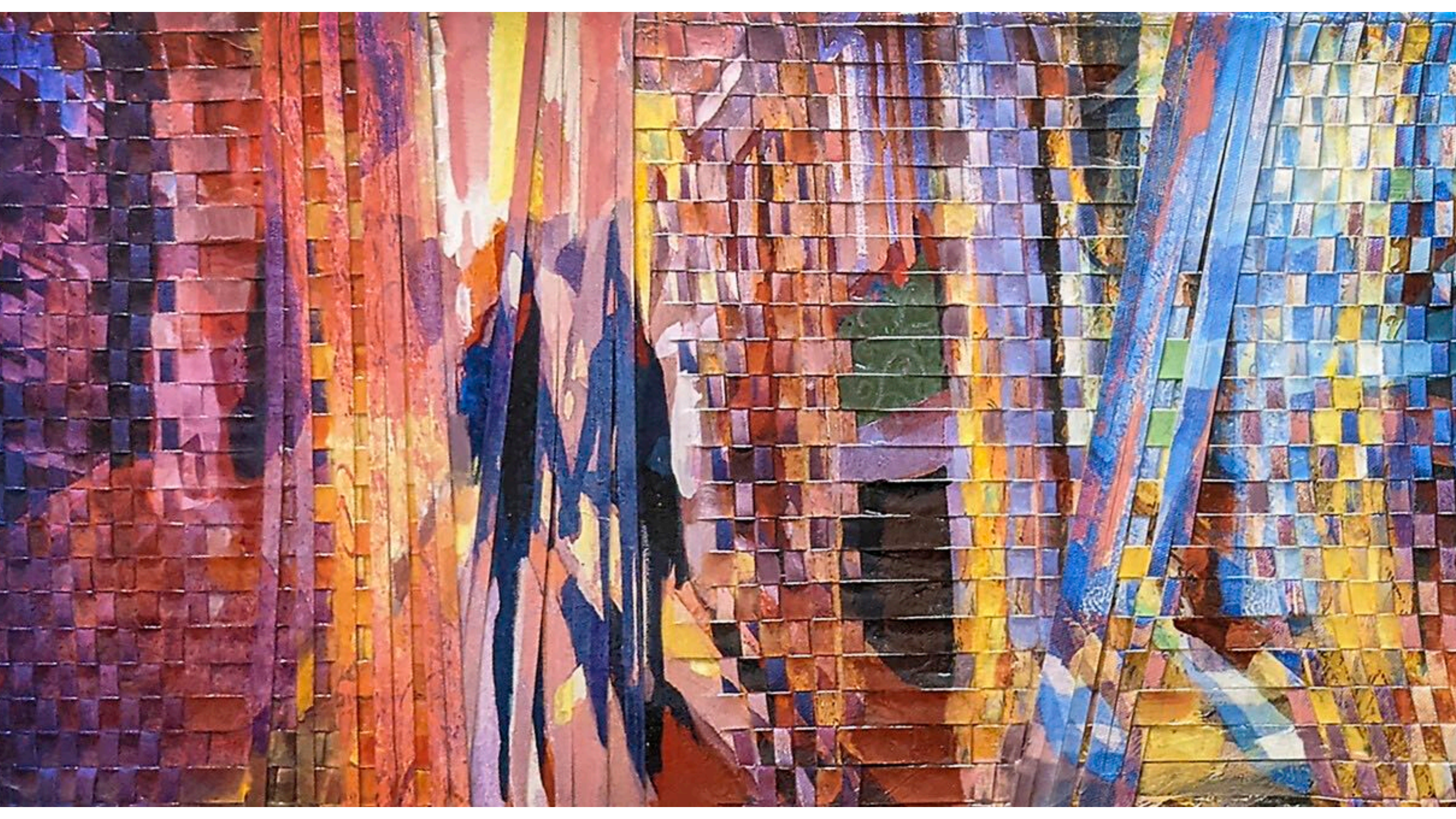


















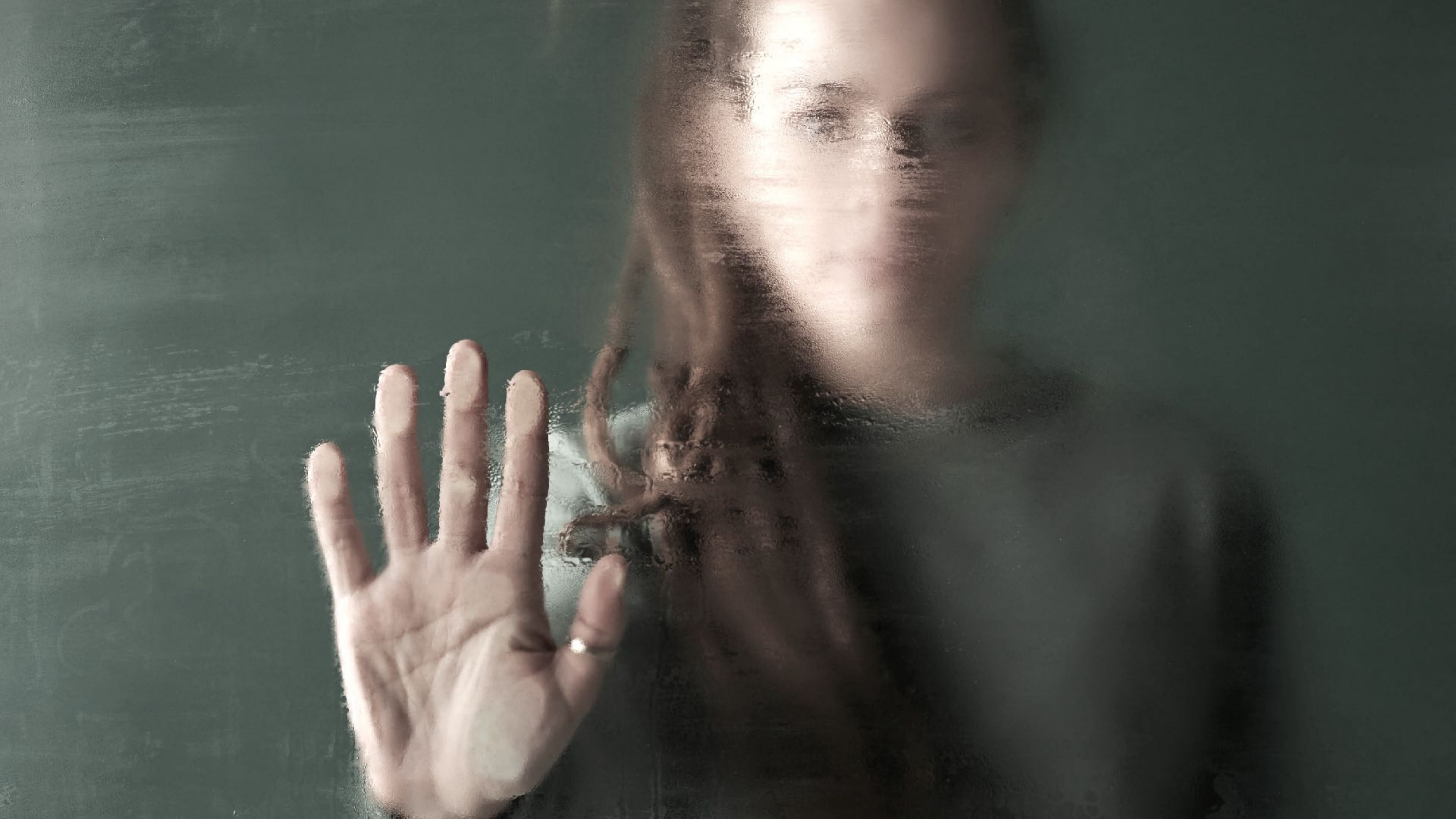
WORLD BUILDING

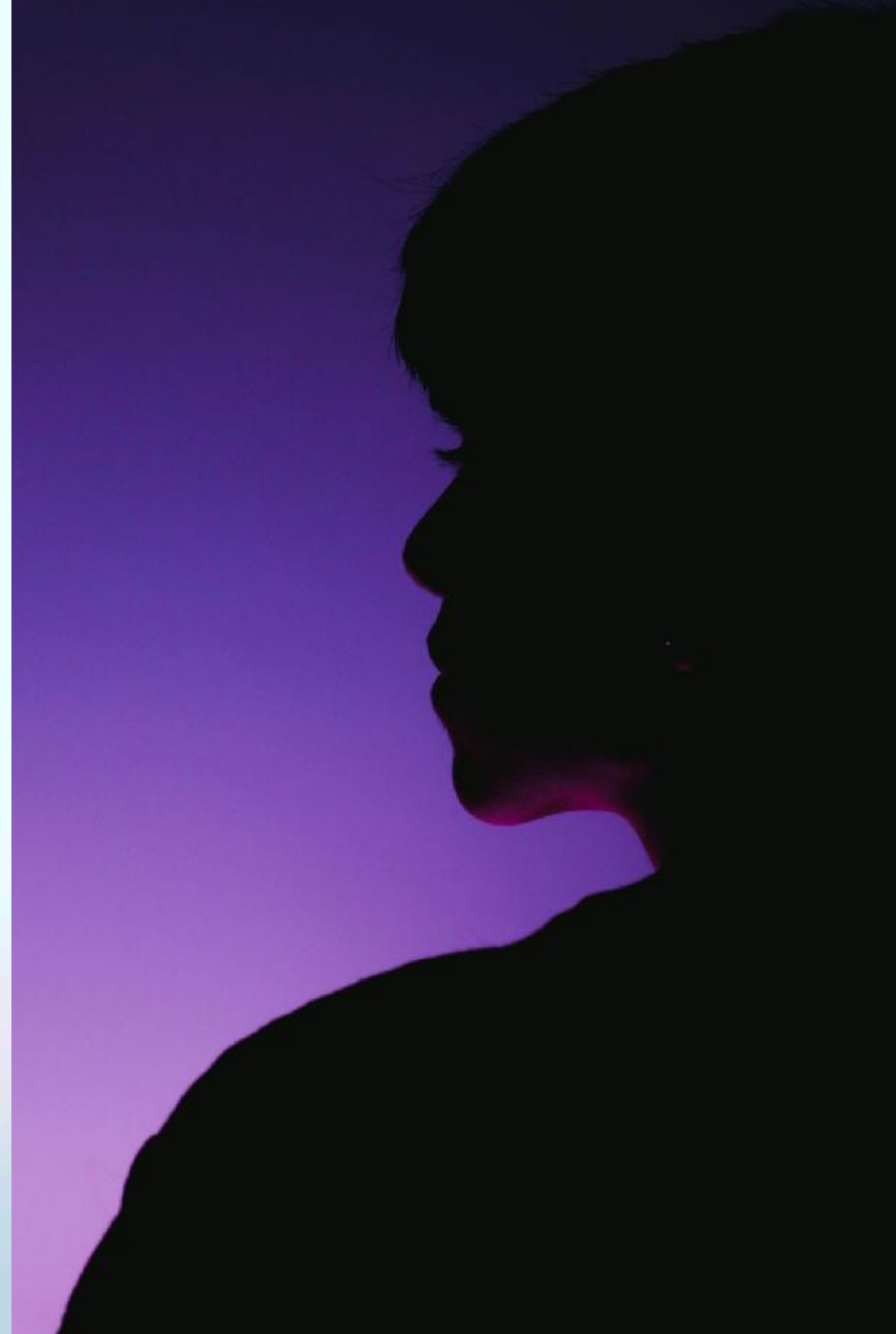




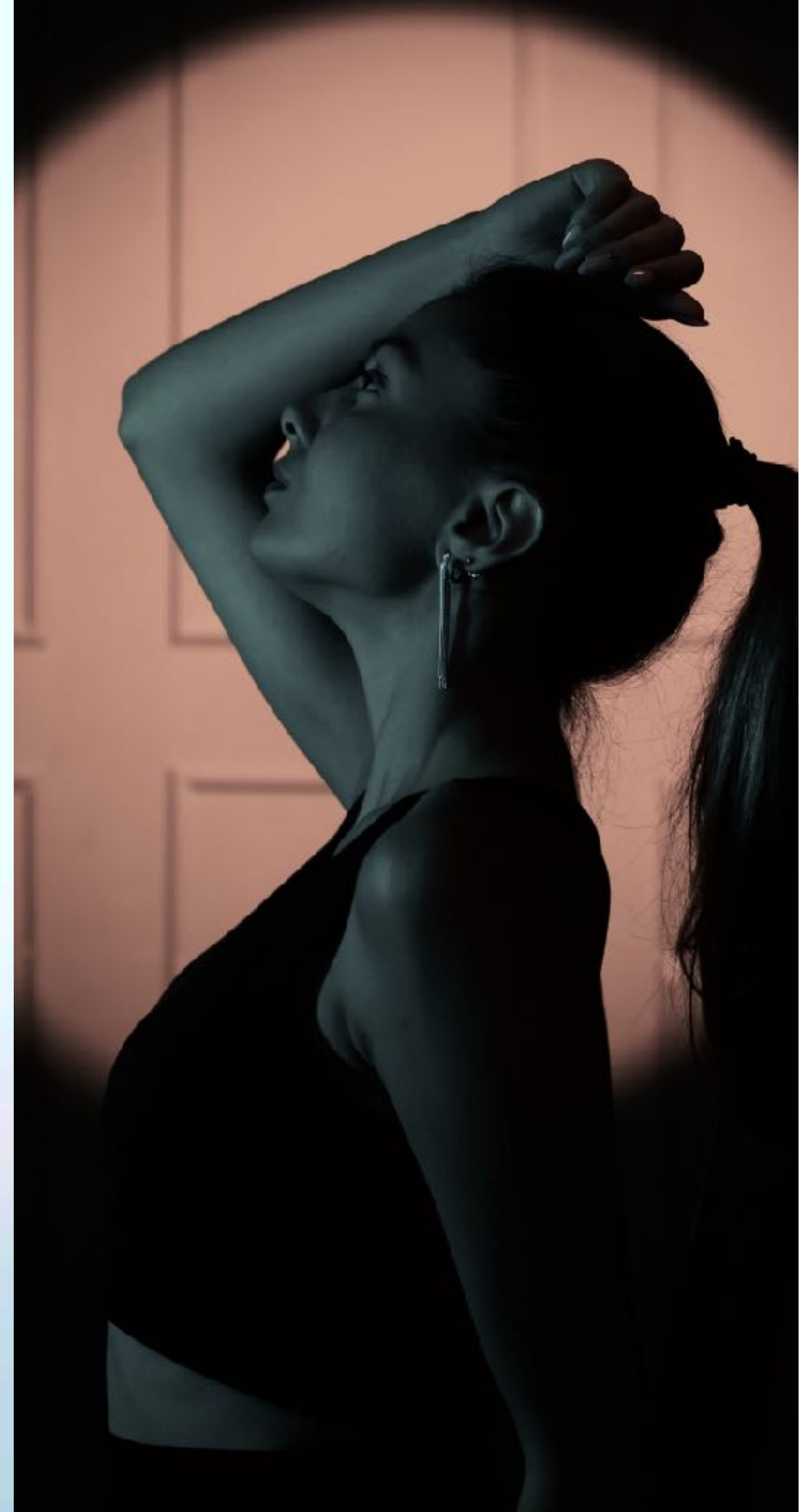
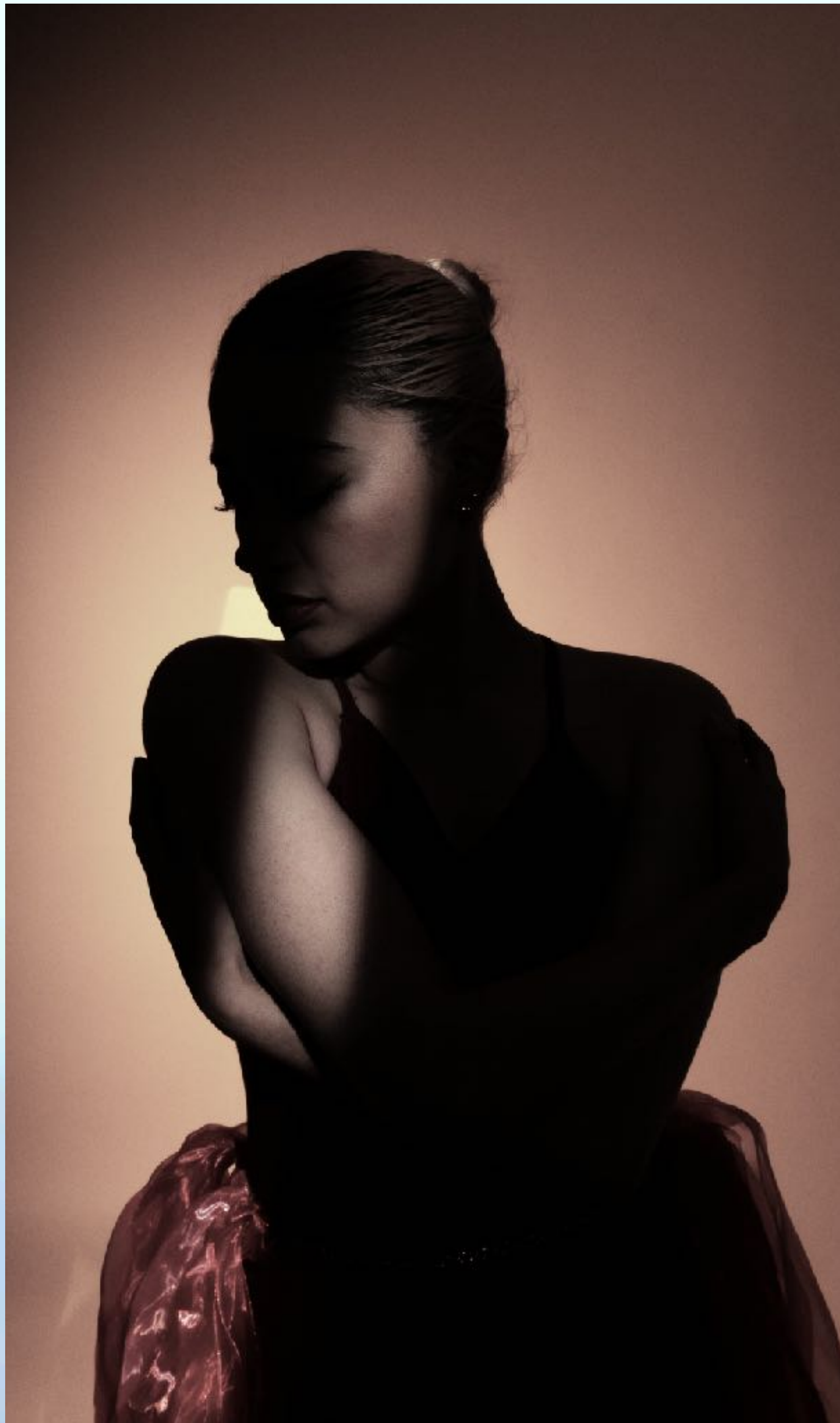


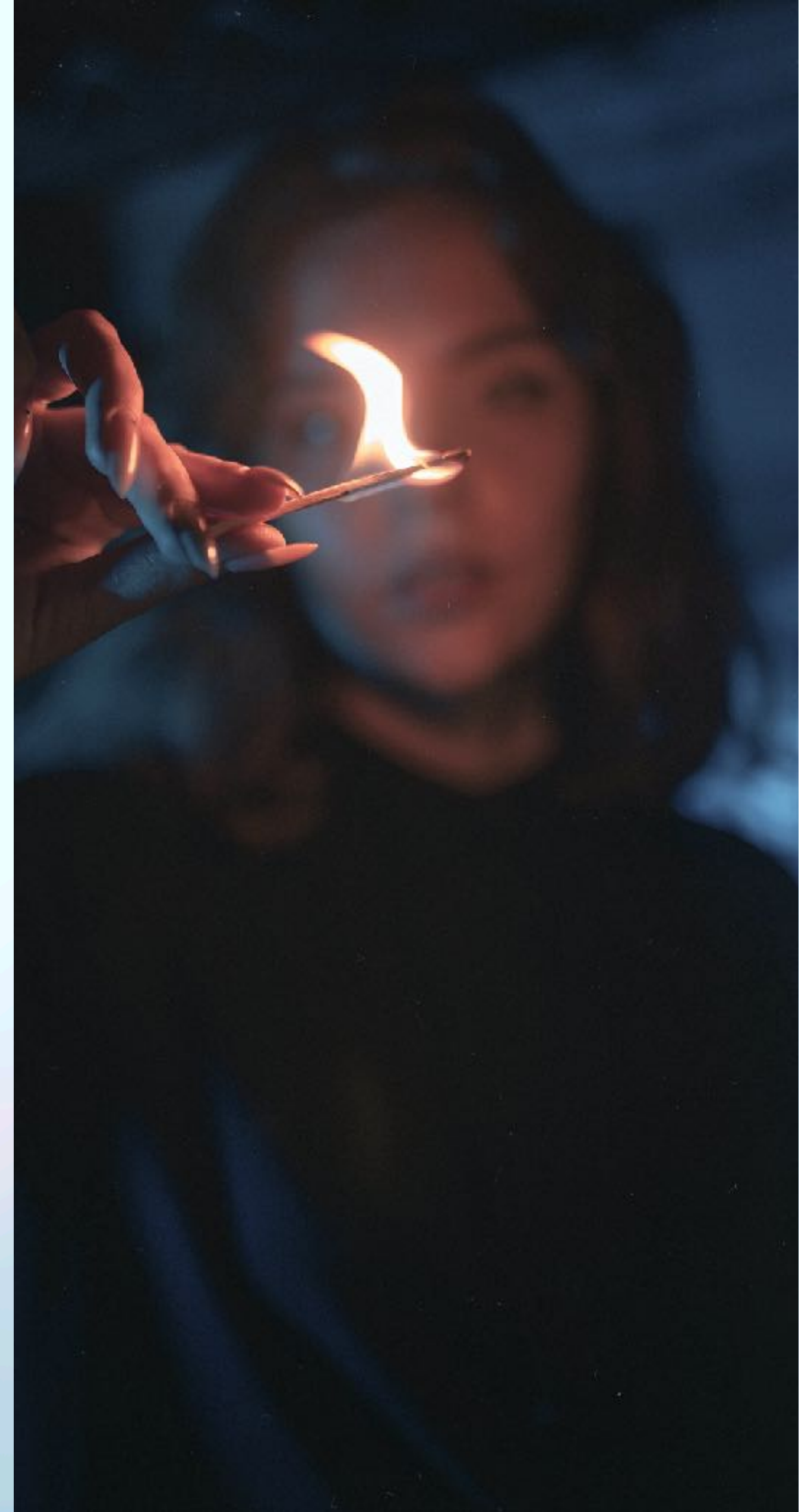
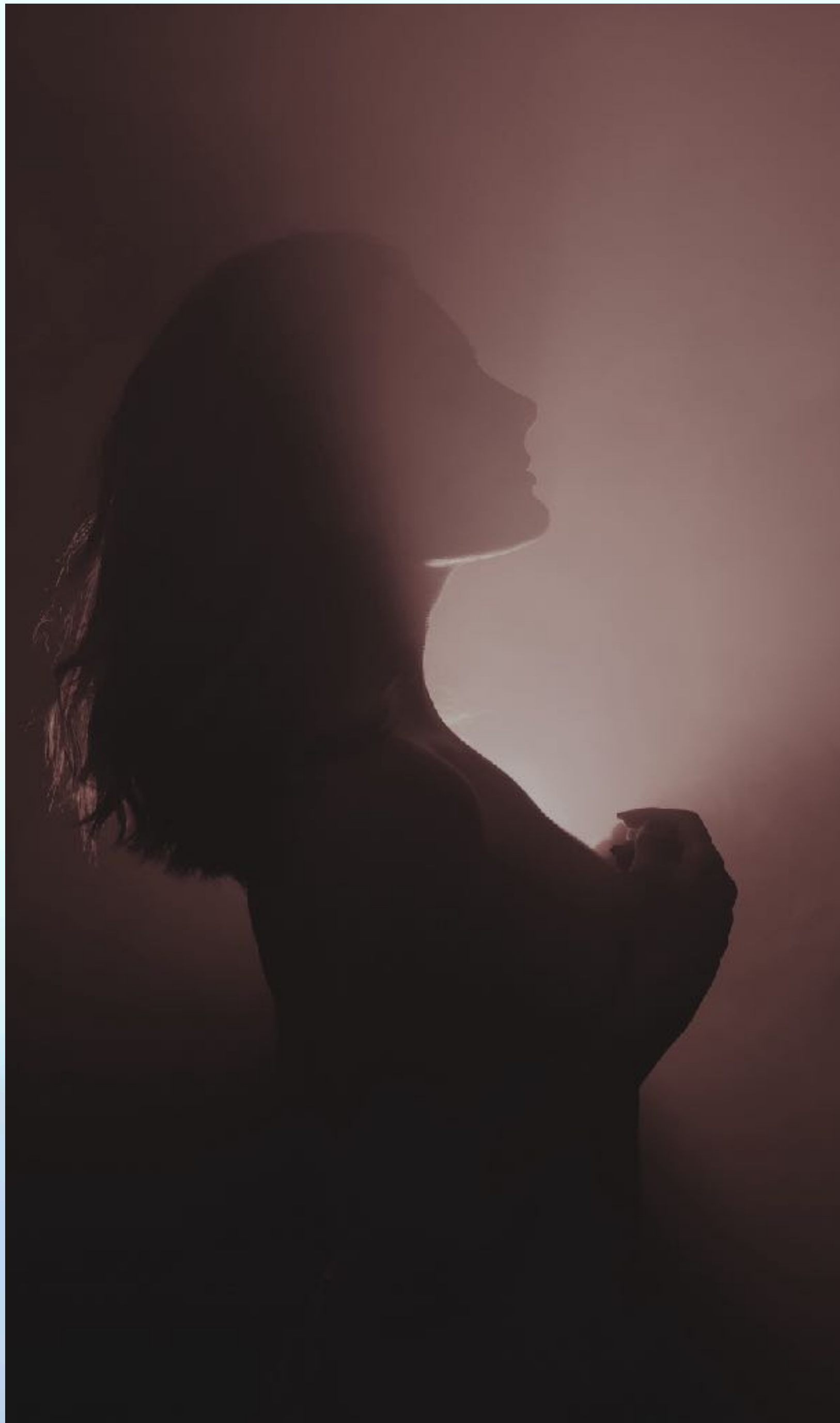


















SEASONS - CONCEPT RENDERING









The final look seamlessly blends both worlds, creating a harmonious balance between warmth and coolness, connection and solitude. It recognizes that both aspects are integral to the human experience: warmth cherished, coolness accepted. The transition from warm to cold tones becomes not just a visual shift but a metaphorical journey through time, emotion, and the cyclical nature of